

Blanks for frame doors

in the thicknesses: 60-100 mm

CE EN 14351-1

Tested accord. to DIN EN 1121

Test climate **c, d, e** from 68 mm class 3 (c), 3 (d), 3 (e)

acc. to DIN EN 12219:2000-06

Burglar resistance RC2/RC3, external door acc. to EN 14351-1

Custom-made

1. Wing frame

- **Lock side:** lamellas in type of wood/colour matching the covering layer. Width approx. 45 mm, glued to inner frame
- **Hinge side:** flawless glulam timber concealed edge band, finger jointed as reduction area, type of wood as lock side
- **Above:** 160 mm flawless glulam timber concealed edge band as reduction area, type of wood as lock side
- **Below:** 160 mm glulam timber concealed edge band according to factory's choice

2. Covering layers (see at page 22 „Plywood covering layers“ data sheet no. 515). Plywood Exterior glued according to DIN EN 314, class 3, MDF-Exterior with a thickness of 3 mm.

Water-repellent treatment of MDF with VARIOTEC Protekt, data sheet no. 471. HPL wating acc. to Exterior collection.

3. FKV technology (Fibre-plastic composite) as a metal-free reinforcement.

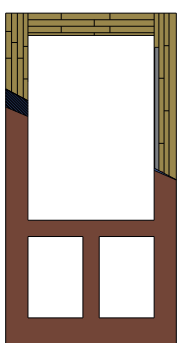
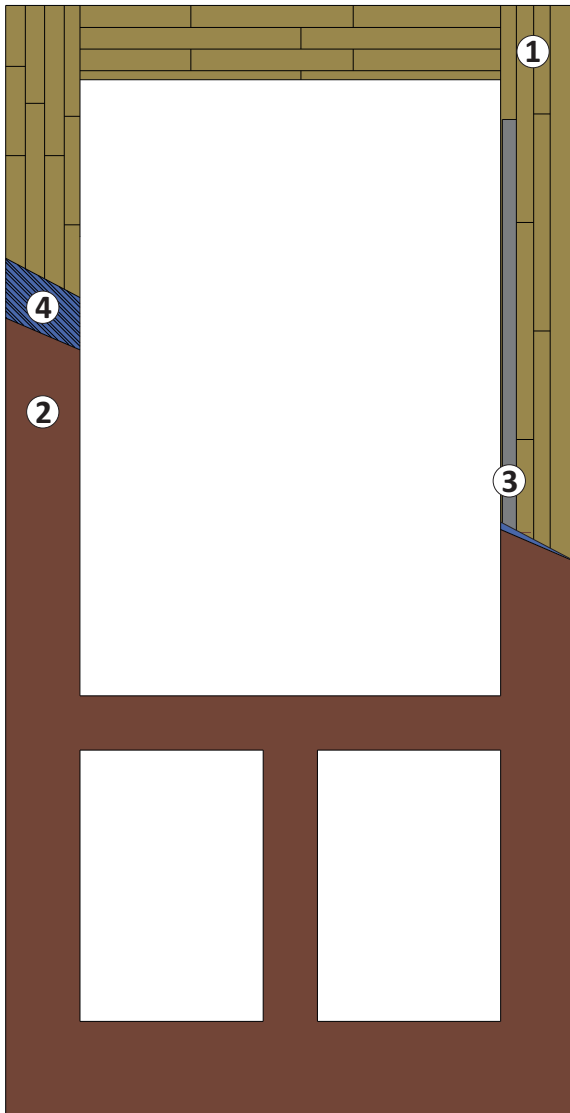
4. ASS Stabilisation layers on both sides as vapour barrier gluing stiff against shearing and tension.

- Jointless surfaces based on the **6-7 mm full surface climate layer** proved in practice from the VARIOTEC panel door construction

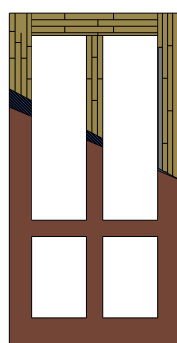
- **FKV stabilizer** on the lock side

- CNC-machined acc. to drawing up to „ready-to-assemble“

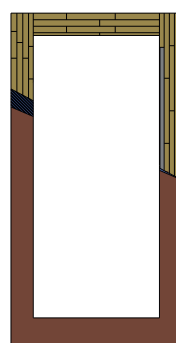
- In all designs and sizes up to **2800 x 1240 mm**



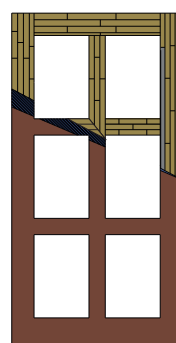
Typ: R1



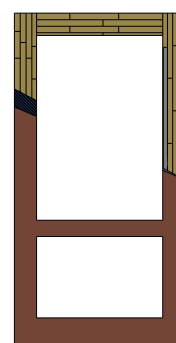
Typ: R2



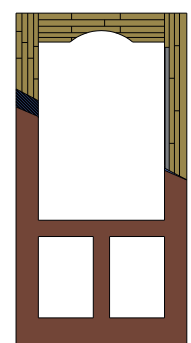
Typ: R3



Typ: R4



Typ: R5



Typ: R6