

# Blanks for frame doors

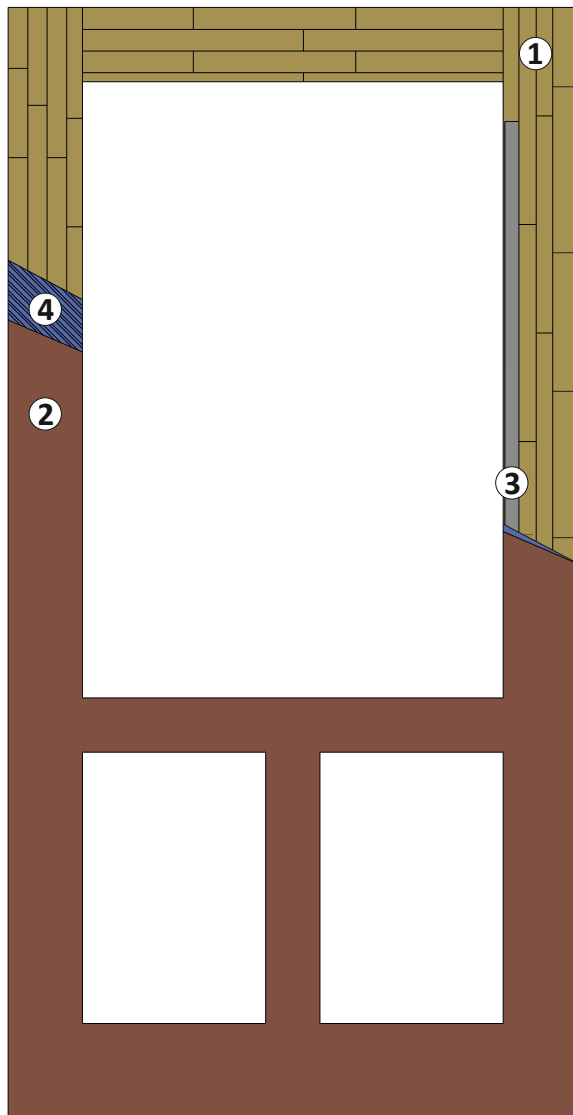
in the thicknesses: 60-100 mm

CE EN 14351-1

Tested accord. to DIN EN 1121

Test climate **c, d, e** and class 3 (c), 3 (d), 3 (e)

acc. to DIN EN 12219:2000-06. Burglar resistance RC2/RC3



## Custom-made

### 1. Wing frame

- **Lock side:** lamellas in type of wood/colour matching the covering layer.
- **Hinge side:** glulam timber concealed edge band, finger jointed, type of wood as lock side
- **Above:** glulam timber concealed edge band, type of wood as lock side
- **Below:** glulam timber concealed edge band according to factory's choice

**2. Covering layers** (see at page 22 „Plywood covering layers“ data sheet no. 515). Plywood Exterior glued according to DIN EN 314, class 3, MDF-Exterior with a thickness of 3 and 6 mm. **Water-repellent treatment of MDF with VARIOTEC Protekt, data sheet no. 471.** HPL coating acc. to Exterior collection.

**3. FKV technology (Fibre-plastic composite)** as a metal-free reinforcement.

**4. ASS Stabilisation layers** on both sides, as vapour barrier, gluing is stiff against shearing and tension.

- Jointless surfaces based on the **6-7 mm full surface climate layer** proved in practice from the VARIOTEC panel door construction

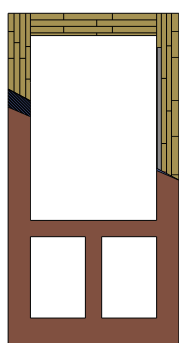
- **FKV stabilizer** on the lock side

FKV stabilizer: Advantage with the total weight of the blank

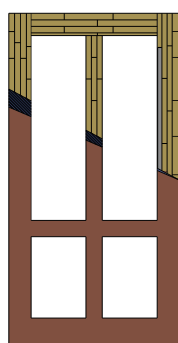
- CNC-machined acc. to drawing up to „ready-to-assemble“

- In all designs and sizes up to **2800 x 1240 mm**

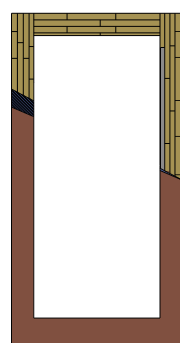
Technical modifications excepted!



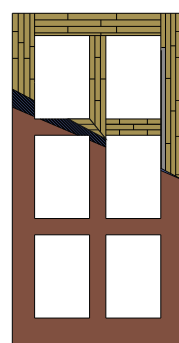
Typ: R1



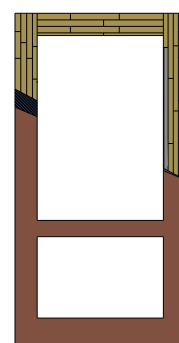
Typ: R2



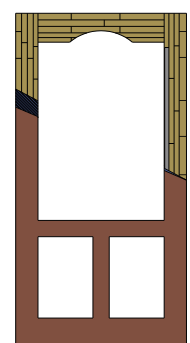
Typ: R3



Typ: R4



Typ: R5



Typ: R6