

# Integral L VIP in the thickness: 68 mm (special thicknesses possible)

Fire protection EI<sub>2</sub> 30-C5-S<sub>200</sub> acc. to EN 16034

CE EN 14351-1

Proved special construction: door blank for apartment doors, external and special areas



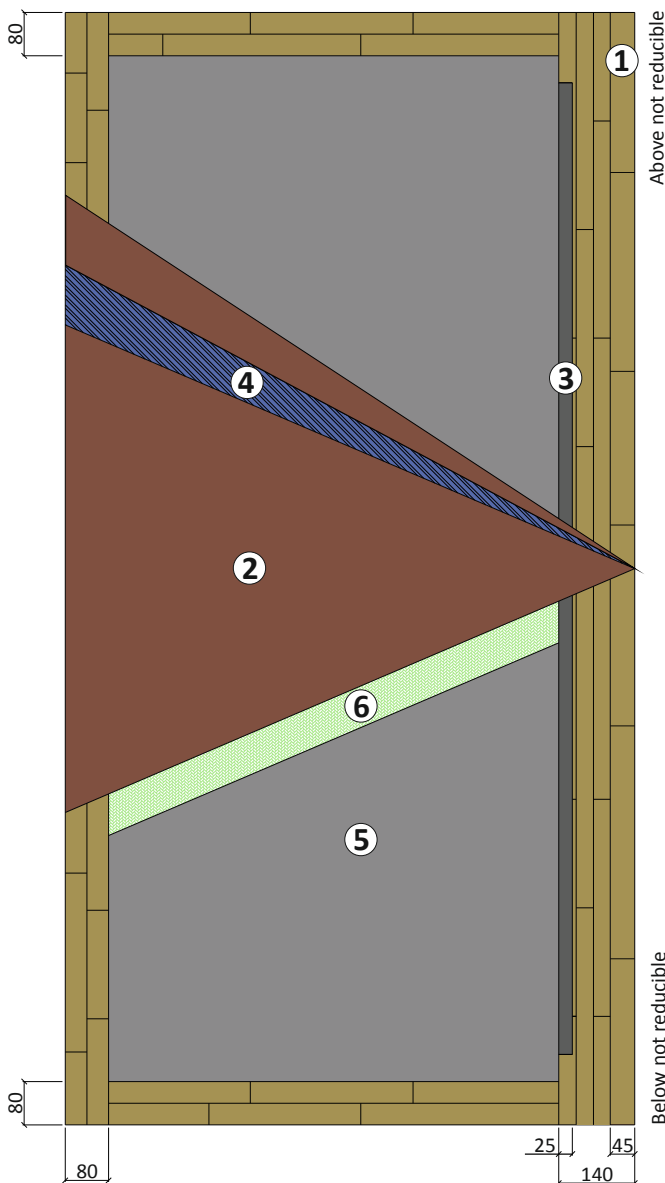
Tested accord. to DIN EN 1121

Test climate **c, d, e** from 68 mm class 3 (c), 3 (d), 3 (e)

acc. to DIN EN 12219:2000-06. Burglar resistance RC2/RC3

Hinge side  
Not reducible

Lock side  
Not reducible



### Custom-made

- Sound protection and thermal insulation individually realisable

#### 1. Wing frame

- Lock side: lamellas in type of wood/colour matching the covering layer. Width approx. 45 mm, glued to inner frame
- Hinge side: flawless glulam timber concealed edge band, type of wood as lock side
- Above: flawless glulam timber concealed edge band, type of wood as lock side
- Below: glulam timber concealed edge band as lock side

#### 2. Covering layers

(see at page 22 „Plywood covering layers“ data sheet no. 515) Plywood Exterior glued according to DIN EN 314, class 3, MDF-Exterior with a thickness of 3 and 6 mm. **Water-repellent treatment of MDF with VARIOTEC Protekt, data sheet no. 471.** HPL coating acc. to Exterior collection.

**3. FKV technology (Fibre-plastic composite)** as a metal-free reinforcement. FKV stabilizer: Advantage for the total weight of the blank.

#### Design example:

Sound protection	U <sub>p</sub> value	VIP thickness
42 dB	0,72 W/(m <sup>2</sup> K)	15 mm
37 dB	0,61 W/(m <sup>2</sup> K)	25 mm
30 dB	0,56 W/(m <sup>2</sup> K)	35 mm

U<sub>p</sub> values for size 2250 x 1050 mm

**4. ASS** Stabilisation layers on both sides, as vapour barrier, gluing is stiff against shearing and tension.

#### 5. Core insulation

VIP construction core (VIP=vacuum insulation panel), construction-biologically tested, recyclable, not suitable for subsequent cut-outs/boreholes (**do not drill!**).

#### 6. Fire protection insert

**PUR** gluing of the whole construction.

The functionality, withstand capability, weathering qualities of the surfaces, and all the other characteristics which can be expected of an entry door, depend on the adherence of technical guidelines, coatings on dimensionally stable external parts made of wood, especially on windows and outside doors. Leaflet no. 18 and VOB (German Construction Contract Procedures) part A 10.3 as well as the RAL quality and test requirements for the construction of wooden entry doors RAL GZ 996. The application recommendations for external building elements from the ift-Rosenheim and VFF-Frankfurt am Main, as well as the guidelines of the EN 14351-1:2006+A1:2010 have imperatively to be maintained.

